

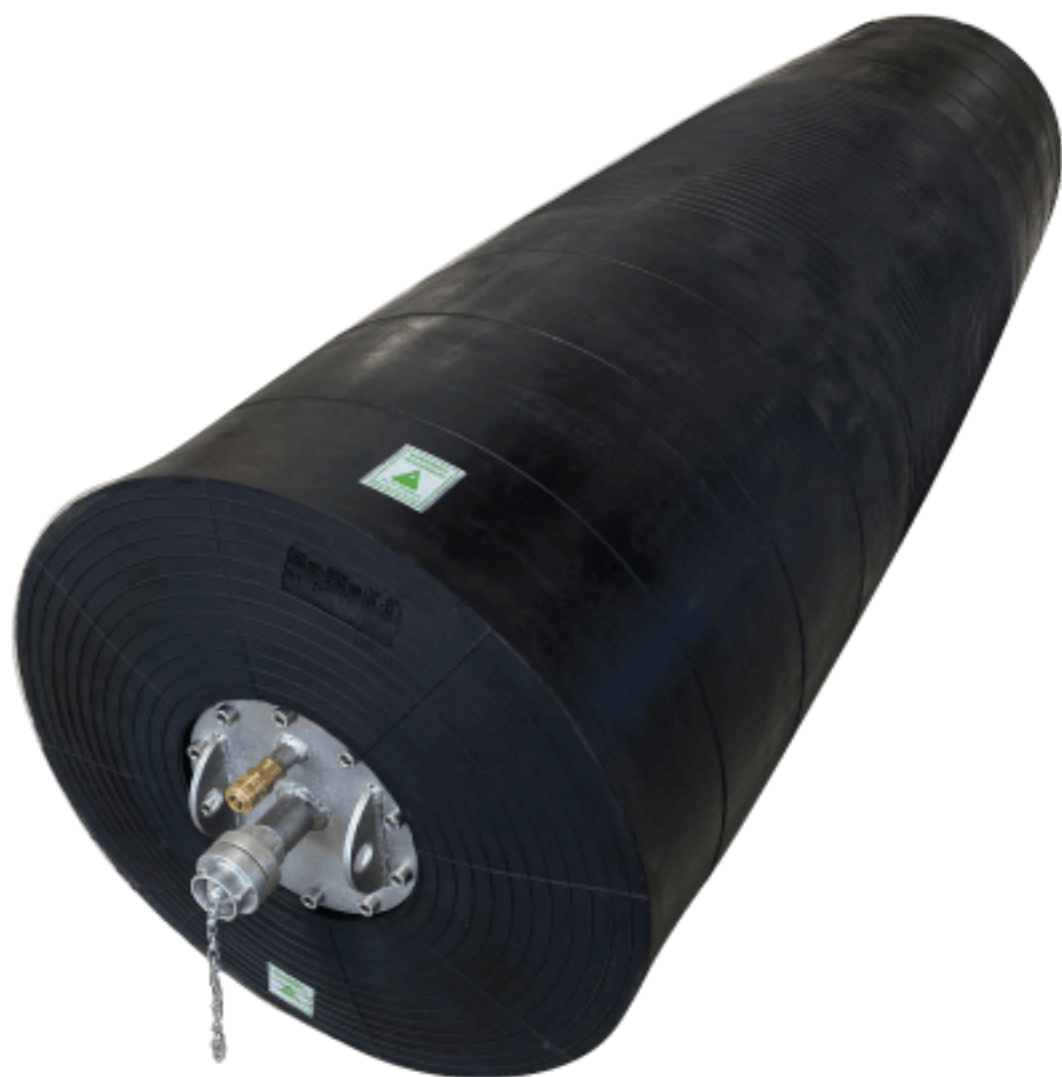
High Pressure Pipe Test Plugs



TAPASAN High Pressure Pipe Test Plugs used to temporarily blocking the pipelines and with high back pressure and to ensure the evacuation of the fluid in the pipeline. It is produced by vulcanizing SBR+NR rubber and high strength fabrics. between -30°C and +70°C temperature resistant. It is the ideal product type for blocking lines with a water height of 10m and above. They are resistant up to 60m (6 Bar) back pressure.

*It can be produced with NBR rubber resistant to gas, petroleum and derivatives.

Product Code : YKTB



Product Code	Size Usage Range		Max. Working Pressure (bar) / (psi)	Deflated Plug Dimensions		Back Pressure (bar) / (psi)	By-pass Size (inch)
	Min. Diameter (mm) / (inch)	Max. Diameter (mm) / (inch)		Diameter (mm) / (inch)	Total Length (mm) / (inch)		
	YKTB70100	70 / 2.8"		100 / 4"	6.0 / 87		
YKTB100	100 / 4"		10.0 / 145	91 / 3.5"	550 / 21.6"	6.0 / 87	1"
YKTB100150	100 / 4"	150 / 6"	6.0 / 87	91 / 3.5"	550 / 21.6"	3.0 / 44	1"
YKTB150	150 / 6"		10.0 / 145	140 / 5.5"	550 / 21.6"	6.0 / 87	2"
YKTB150200	150 / 6"	200 / 8"	6.0 / 87	140 / 5.5"	550 / 21.6"	3.0 / 44	2"
YKTB200	200 / 8"		10.0 / 145	187 / 7.3"	650 / 25.5"	6.0 / 87	2"
YKTB200300	200 / 8"	300 / 12"	6.0 / 87	187 / 7.3"	650 / 25.5"	3.0 / 44	2"
YKTB300	300 / 12"		10.0 / 145	187 / 7.3"	800 / 31.4"	6.0 / 87	2"
YKTB300400	300 / 12"	400 / 16"	6.0 / 87	286 / 11.2"	850 / 33.4"	3.0 / 44	2"
YKTB375	375 / 15"		10.0 / 145	361 / 14.2"	1000 / 39.3"	6.0 / 87	2"
YKTB375500	375 / 15"	500 / 20"	6.0 / 87	361 / 14.2"	1000 / 39.3"	3.0 / 44	2"
YKTB500	500 / 20"	600 / 24"	10.0 / 145	485 / 19.0"	1100 / 43.3"	6.0 / 87	2"
YKTB500600	500 / 20"	600 / 24"	6.0 / 87	485 / 19.0"	1100 / 43.3"	3.0 / 44	2"
YKTB600	600 / 24"		10.0 / 145	586 / 23.0"	1300 / 51.1"	6.0 / 87	2"
YKTB600700	600 / 24"	700 / 28"	6.0 / 87	586 / 23.0"	1300 / 51.1"	3.0 / 44	2"
YKTB800	800 / 32"		10.0 / 145	782 / 30.7"	1300 / 51.1"	6.0 / 87	2"
YKTB8001000	800 / 32"	1000 / 40"	6.0 / 87	782 / 30.7"	1300 / 51.1"	3.0 / 44	2"
YKTB1200	1200 / 48"		5.0 / 72,5	1174 / 46.2"	1300 / 51.1"	3.0 / 44	2"
YKTB1400	1400 / 55"		4.0 / 58	1174 / 46.2"	1600 / 62.9"	2.0 / 29	2"



Connection Type
(R 1/4" & Storz)



Technical Details
Label



Warning
Label



By-pass
Design